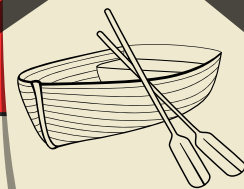


February 10,  
2025

# SOUTH BRISTOL SCHOOL

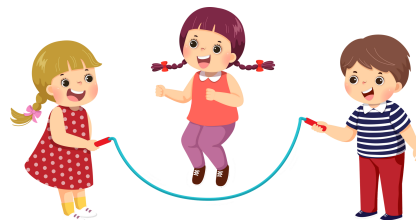


## MEET THE SBS/BCS BASKETBALL TEAM!



### UPCOMING EVENTS

- 2/8 - BUSLINE LEAGUE BBALL CHAMPIONSHIP
- 2/10-2/14 - SPIRIT WEEK (SEE BELOW FOR DETAILS)
- 2/10 - JUMP ROPE DEMO TEAM SHOW
- 2/11 - JUMP ROPE CLUB PRACTICE 7:15
- 2/11 - 3/4 TENNIS @ CLC YMCA
- 2/11 - LINCOLN COUNTY SPELLING BEE 5PM @ JVS
- 2/11 - LA COURSE REGISTRATION FOR 8TH GRADE 6:30
- 2/12 - JUMP ROPE DEMO TEAM PRACTICE 7:15
- 2/12 - FULL MOON SLEDDING 6:00
- 2/13 - CIRCUS ARTS 2:45
- 2/14 - 8TH BOAT BUILDING
- 2/24 - OUTING CLUB SKI TRIP TO LOST VALLEY
- 2/25 - JUMP ROPE CLUB PRACTICE 7:15
- 2/25 - STAFF MEETING 2:45
- 2/26 - JUMP ROPE DEMO TEAM PRACTICE 7:15
- 2/27 - CIRCUS ARTS 2:45
- 2/28 - 8TH BOAT BUILDING
- 2/28 - PK/K TO COASTAL RIVERS



**PICKLEBALL 10:00**

**EVERY SATURDAY**

**COMMUNITY SOCCER 9:30**

**EVERY SUNDAY**

**NO EXPERIENCE NECESSARY!**

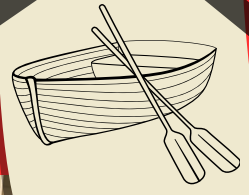


**MARK YOUR CALENDAR FOR TOWN MEETING @ SBS ON MARCH 11 @ 7PM**



February 10,  
2025

# SOUTH BRISTOL SCHOOL



*Congratulations,  
South Bristol School!*

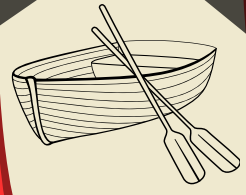
**1ST PLACE -- GRADES 7/8 TEAM  
2ND PLACE -- GRADES 5/6 TEAM  
AT THE  
DISTRICT ROUND OF THE  
GREAT MAINE BOOK TOURNAMENT**

**WE ARE SO PROUD OF YOU!**



February 10,  
2025

# SOUTH BRISTOL SCHOOL



SBS/BCS  
BASKETBALL

[See more photos here](#)





# School Spirit Week:

## February 10-14!

**MONDAY**

Tropical Day



**TUESDAY**

Multiples/Twin Day or  
Wear SBS colors/gear!



**WEDNESDAY**

Character Day!



**THURSDAY**

Anything but a Backpack Day!

(Bring your lunch and/or school supplies in anything but a regular backpack!)



**FRIDAY**

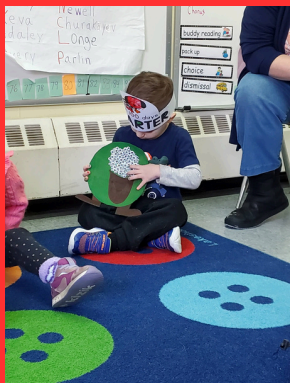
Pajama Day or Pink/Red  
for Valentine's Day!



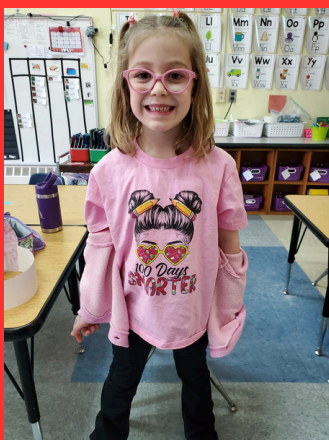
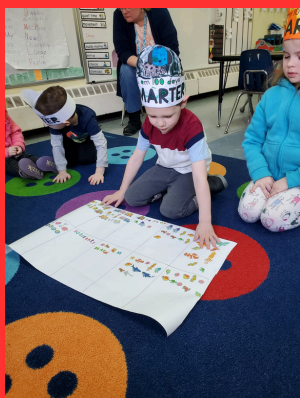


February 10,  
2025

# SOUTH BRISTOL SCHOOL



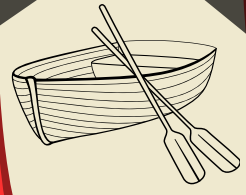
**PRE K AND K CELEBRATED  
THE 100TH DAY OF SCHOOL!**





February 10,  
2025

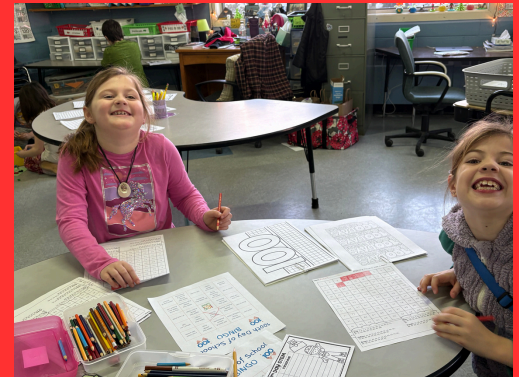
# SOUTH BRISTOL SCHOOL



WHAT'S NEW IN 1/2



100 DAYS  
- of -  
SCHOOL  
- flew by -



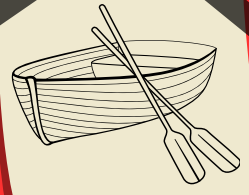
Please remember to send  
your Yeti with hats,  
mittens/gloves, winter  
jackets, snow pants  
& indoor shoes  
(no slippers, please).





February 10,  
2025

# SOUTH BRISTOL SCHOOL



Third and fourth graders were excited to assemble the Digi-blocks resource that the Math4Maine coaches brought us. One thousand blocks fit inside the green container!

Students had a great time snowshoeing in the fresh snow.



3/4

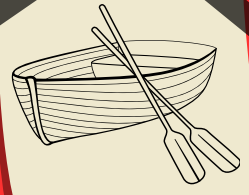
Our class worked together to make enchiladas from scratch (including sauce AND tortillas) at FARMS.





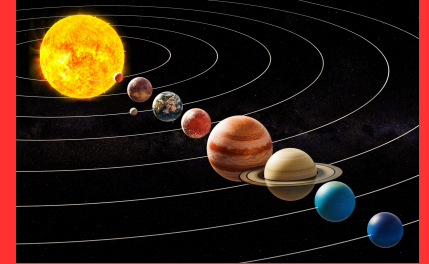
February 10,  
2025

# SOUTH BRISTOL SCHOOL



5TH & 6TH  
GRADERS SHOOT  
THE SOUTH BRISTOL  
SCOOP WITH LCTV

WATCH OUR MOST  
RECENT EPISODE



ALL 5TH GRADERS SHOULD LEARN ABOUT  
THE PLANETS WHILE IN THE SNOW!

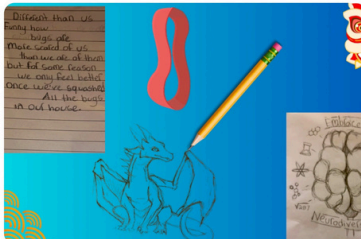
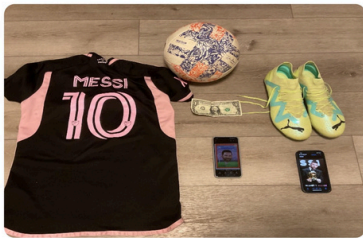
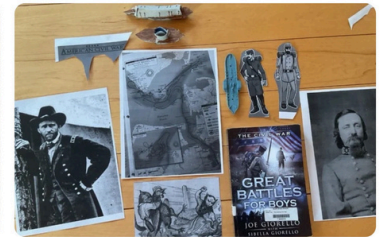
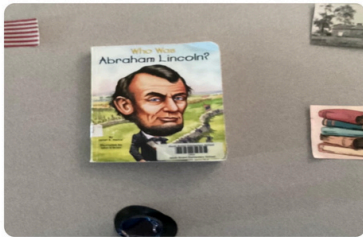
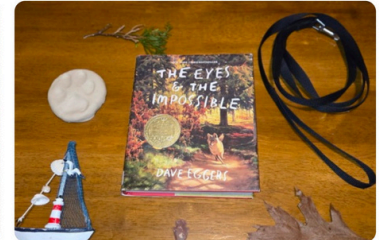
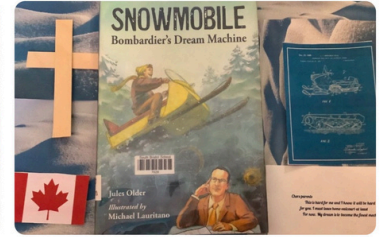
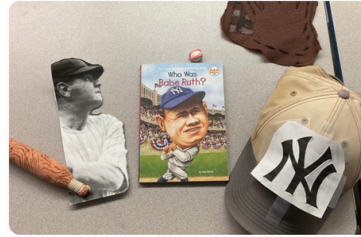
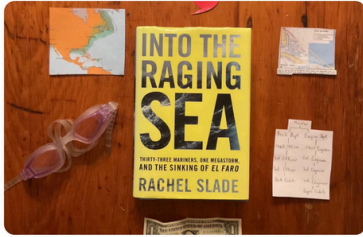


February 10,  
2025

# SOUTH BRISTOL SCHOOL

6-8

## Book Bentos



The 6-8 students produced these stunning Book Bentos in ELA!

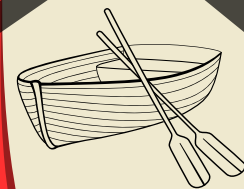


The 5th graders did a beautiful job on their non-fiction One-Pager posters!



February 10,  
2025

# SOUTH BRISTOL SCHOOL



THE 8TH GRADERS MAKE GREAT PROGRESS  
FRIDAYS BUILDING THEIR BOATS!



LEARNING  
WITH  
LILY IS  
ALWAYS  
FUN





## MATH 4 MAINE

This month Math Buddies  
played Shut the Box.

Ask a student to teach you how  
to play or [click here](#) for rules  
and variations.

Students encounter these questions in the hallway. As a family you can join in with the conversation by asking your children how they would answer the question (and why!) and sharing your thinking as well. (Spoiler alert: the questions are designed so all answers are correct. Discuss as a family what the reasoning could be for each answer.)

### WOULD YOU RATHER....

Share equal slices of cake from pan A  
with 8 friends OR share equal slices of  
cake from pan B with 6 friends?

Cake A



Cake B



### WHICH ONE DOESN'T BELONG?







# BOOSTERS

## VALENTINE'S CARNATION ORDERS!!


On Wednesday, 2/12/25, Boosters will be selling "Friend Gram" carnations at school for \$1.00. If your child would like to send a "Friend Gram" please send in an envelope with the money and the name of the recipient(s). If you would like to purchase flowers \*secretly\* for your child, the information can be emailed directly to [tseiders@aos93.org](mailto:tseiders@aos93.org) by 4:00pm on 2/12/25.

(Checks can be made to SBS Boosters)

Carnations will be delivered at school on Friday, 2/14/25

Example: Envelope with \$3 and order details-

\$1 for Mrs. Stiles

"To Mrs. Stiles, Thank you for putting your  into all you do. From, Carol"

\$1 for child's friend named Steve

"To Steve, Happy Valentine's Day. From, Sally"

\$1 for my child

"To Sally, Lots of love, Grammy"

We will write your messages and tie them to the flowers.

If students want to write their own messages, we will have blank cards at school for them to do so.

## SPIRIT WEEK DETAILS!

Students have been working hard to come up with fun activities for Spirit Week!!

February 10-14th

**Monday-** Tropical Day

**Tuesday-** Multiples/Twin Day or wear SBS colors!

**Wednesday-** Character Day

**Thursday-** Anything but a backpack day

**Friday-** Pajama Day or wear red/pink for Valentine's Day



PLUS: Carnival games, minute-to-win-it challenges, and Family Feud Fun, all planned by the YAC students and Jr. Boosters to brighten our winter spirits!!!



**Take care  
of your body**



**NOTE FROM NURSE CRYSTAL**

**ATTENTION PARENTS:**



**SBS HAS HAD SOME CASES OF THE NOROVIRUS WHICH SYMPTOMS INCLUDE NAUSEA, VOMITING, DIARRHEA, AND STOMACH CRAMPING. PEOPLE MAY ALSO EXPERIENCE LOW-GRADE FEVER, HEADACHE, WEAKNESS, AND MUSCLE ACHES. WE ARE REQUESTING YOUR DILIGENCE IN MONITORING YOUR CHILD/REN.**

**IF YOUR CHILD HAS A FEVER OVER 100.4, VOMITING, DIARRHEA, OR OTHER SYMPTOMS BELOW THEY SHOULD STAY HOME; ALSO IF THEY ARE JUST STILL NOT FEELING WELL ENOUGH TO BE AT SCHOOL. STUDENTS CAN RETURN AFTER 24 HOURS OF FEVER BELOW 100.4 AND NAUSEA, VOMITING AND DIARRHEA HAVE SUBSIDED AND THEY FEEL WELL ENOUGH TO BE AT SCHOOL.**

**WE HAVE ALSO HAD STUDENT/S TEST POSITIVE FOR INFLUENZA B WHICH SYMPTOMS INCLUDE:**



**FEVER OR CHILLS  
COUGH  
SORE THROAT  
RUNNY OR STUFFY NOSE  
BODY ACHES  
HEADACHE  
FATIGUE**



**NAUSEA AND VOMITING (MORE COMMON IN CHILDREN)**

**DIARRHEA (RARE)**

**DIZZINESS (RARE)**

**THESE SYMPTOMS USUALLY APPEAR ABRUPTLY AND CAN LAST FOR SEVERAL DAYS TO A WEEK. IN SOME CASES, INFLUENZA B CAN LEAD TO MORE SERIOUS COMPLICATIONS, SUCH AS PNEUMONIA OR BRONCHITIS.**

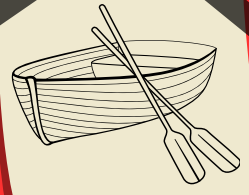
**EXTRA HAND WASHING AND WASHING OF TOYS AND SURFACES AT SCHOOL AND AT HOME WILL HELP TO REDUCE THE SPREAD!**

**PLEASE REACH OUT WITH ANY QUESTIONS OR CONCERNS, [CREADY@AOS93.ORG](mailto:CREADY@AOS93.ORG).**



February 10,  
2025

# SOUTH BRISTOL SCHOOL



HEALTH/PE

**SNOWSHOEING AND CROSS COUNTRY SKIING WERE A  
HIT THIS WEEK IN PE!  
MORE TO COME NEXT WEEK.**







# Full Moon Sledding

When: Wednesday February 12th 2025 from 6:00-7:30 PM

Where: Wawenock Golf Course: 685 ME-129,  
Walpole, ME 04573

What to bring:

Winter gear (snow pants, hat, gloves, jacket etc.)

Headlamp or flashlight

Sled, tube, etc.

Water or hot coco

**We encourage parents to stay but if you'd like to drop your student (4-8) off please tell Ms. Jordan and fill out the clipboard with your phone number so she has a headcount of students.**

**(Only SBS Students)**





# SOUTH BRISTOL SCHOOL

**Bring your child and let  
them help cut and  
move the ice blocks!**



## THOMPSON ICE HOUSE

Route 129  
South Bristol, Maine

**FREE - FREE - FREE**

Everyone is invited to our annual

**Ice Cutting & Harvest**

**Sunday, February 16, 2025**

Prep work starts approximately at 9am

Festivities start at 10am

Concession opens at 11am

Donations appreciated – all money contributed goes to the  
preservation of the Thompson Ice House and Pond

[www.thompsonicehouse.com](http://www.thompsonicehouse.com)

**CASH/CHECK ONLY FOR FOOD**

**CARDS ACCEPTED FOR MERCHANDISE**